

Charvi Chanana¹, Amitabh Singh², Geeti Khullar¹, Khushpreet Kaur¹, Shruti Sharma³

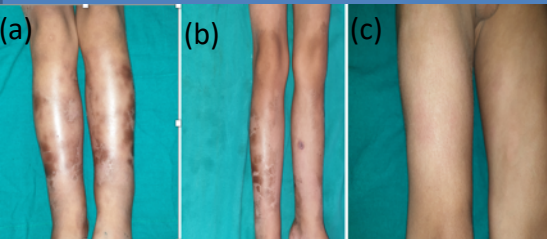
Departments of Dermatology¹ and Paediatrics², Vardhman Mahavir Medical College & Safdarjung Hospital, New Delhi, National Institute of Pathology (ICMR)³

Introduction

- ❖ Subcutaneous panniculitis-like T-cell lymphoma (SPTCL) is a peripheral T-cell lymphoma
- ❖ Constitutes <1% of all non- Hodgkin's lymphoma

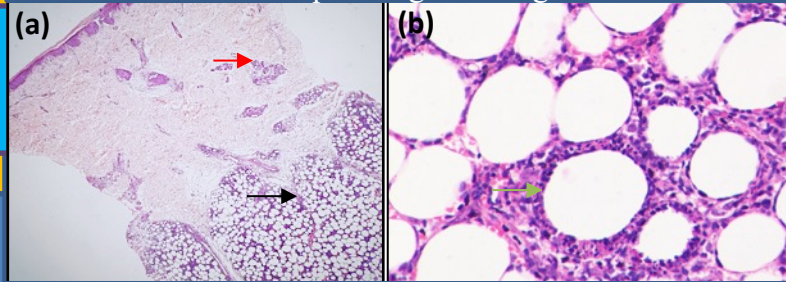
Case description

- ❖ 5-year-old boy complained of multiple painful nodules and plaques on face, trunk, bilateral arms and legs for 1 week along with fever
- ❖ Hepato-splenomegaly, right inguinal lymphadenopathy, pedal edema present
- ❖ No history of joint pains, night sweats, weight loss, sore throat, abdominal pain or recent drug intake



(a) Multiple tender brown-coloured nodules and plaques ranging in size from 2 cm to 5 cm on bilateral legs on day 1 (b) spontaneous recovery after 2 weeks (c) Re-appearance of lesions after 5 weeks

Histopathologic findings



(a) Mild perivascular lymphocytic infiltrate in dermis (red arrow), infiltration of fat lobules with lymphocytes (black arrow) (H&E, x40). (b) Atypical lymphocytes are rimming around the adipocytes with karyorrhectic debris (green arrow) (H&E, x400)

Immunohistochemical findings



Atypical lymphocytes showing positivity for (a) CD8, (b) CD5, (c) CD2

Other investigations

Hemogram	Hb=10.5g/dl , TLC=2700 cells/mm ³ DLC=N28/L62/M14/E0.9 Platelet count=39000cells/mm ³
ANA	Negative
Bone marrow biopsy	No increase in lymphoid cells and few histiocytes showing phagocytosis
PET scan	Active bilateral cervical, axillary, abdominopelvic and inguinal lymph nodes and increased uptake in spleen

Conclusion

- ❖ SPTCL and LE panniculitis have overlapping histopathological features

	SPTCL	LE Panniculitis
Interface changes	+/-	+
Dermal mucin	-/+	+/-
Perivascular/ Peri-adnexal infiltrate	-/+	+/-
Atypical lymphocytes rimming adipocytes	+	-/+
Lymphoid follicle	-/+	+
Hyaline fat necrosis	-/+	+
Plasma cells	-/+	+
Karyorrhexis	+	-/+
CD8,CD2,CD3,CD5	+	-
Ki-67%	High	Low
CD123	-	+

References

- Subcutaneous panniculitis like T-cell lymphoma and other primary cutaneous lymphomas with prominent subcutaneous tissue involvement. Dermatol Clin 2008;26:529-540.
Subcutaneous panniculitis-like T-cell lymphoma: definition, classification, and prognostic factors: an EORTC Cutaneous Lymphoma Group study of 83 cases. Blood 2008; 111:838-845